



Northamptonshire Interactive Mapping Service

This is a guide to displaying the footpaths around Wappenham on the Northamptonshire interactive mapping service.

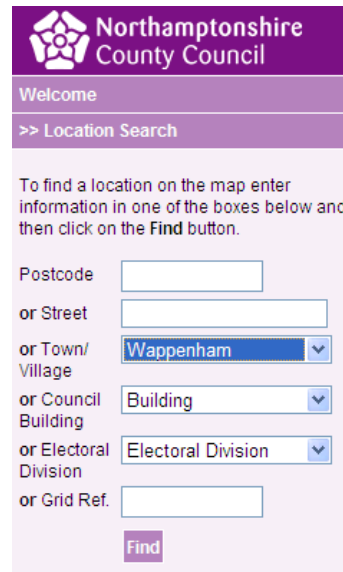
The service can be found at the following web address:

<http://www2.northamptonshire.gov.uk/interactivemapping/mapForm.aspx?width=1024&height=768>

In order to display the footpaths around Wappenham please follow the steps below.

Step 1:

From the menu of the left select Wappenham from town/village and click "find"



Northamptonshire County Council

Welcome

>> Location Search

To find a location on the map enter information in one of the boxes below and then click on the Find button.

Postcode

or Street

or Town/Village **Wappenham** ▼

or Council Building **Building** ▼

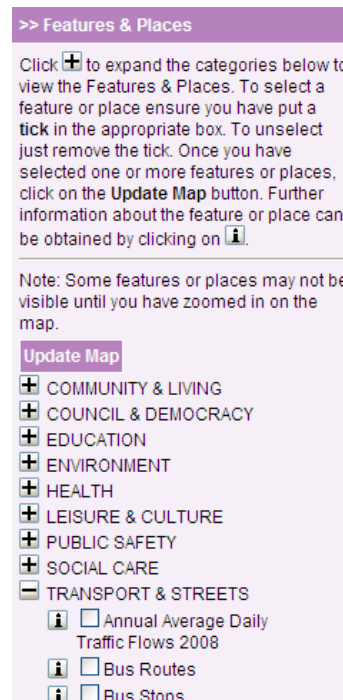
or Electoral Division **Electoral Division** ▼

or Grid Ref.

Find

Step 2:

Click on Features & Places to reveal a further menu, then click on the + sign by TRANSPORT & STREETS to display a further submenu.



>> Features & Places

Click **+** to expand the categories below to view the Features & Places. To select a feature or place ensure you have put a tick in the appropriate box. To unselect just remove the tick. Once you have selected one or more features or places, click on the **Update Map** button. Further information about the feature or place can be obtained by clicking on **i**.

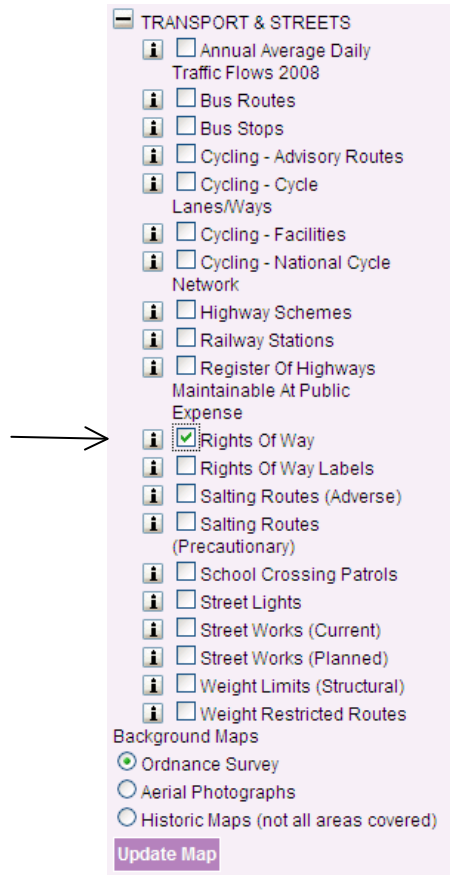
Note: Some features or places may not be visible until you have zoomed in on the map.

Update Map

- +** COMMUNITY & LIVING
- +** COUNCIL & DEMOCRACY
- +** EDUCATION
- +** ENVIRONMENT
- +** HEALTH
- +** LEISURE & CULTURE
- +** PUBLIC SAFETY
- +** SOCIAL CARE
- +** TRANSPORT & STREETS
 - i** Annual Average Daily Traffic Flows 2008
 - i** Bus Routes
 - i** Bus Stops

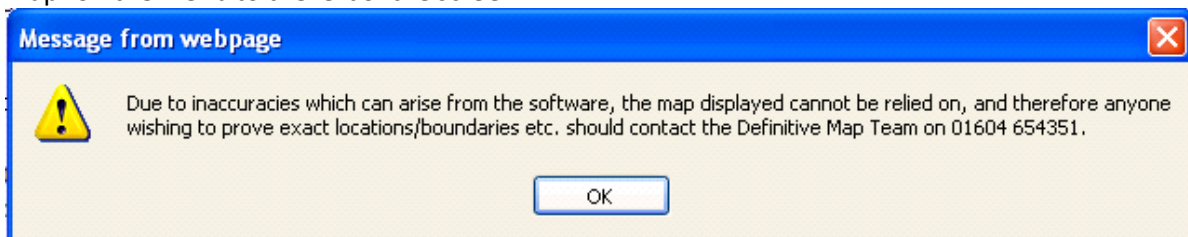
Step 3:

Scroll down the web page to reveal the full submenu under TRANSPORT & STREETS and tick "Rights of Way"



Step 4:

After ticking "Rights of Way" the following message will be received, click ok and click "Update Map" on the menu to the left of the screen.



Step 5:

Towards the top of the webpage the map below will be displayed showing the local rights of way. You can zoom in and out and recentre the map as required to show any area of interest. This map can also be easily printed to help you easily enjoy our local rights of way.

